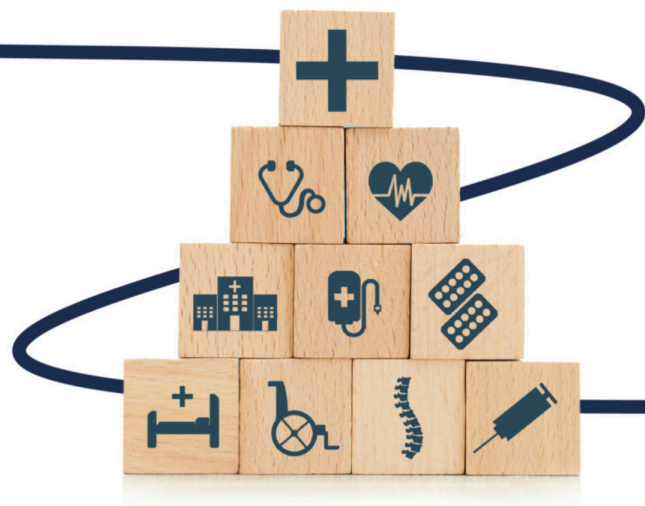


james hallam
insurance brokers

ProMed



ProMed is a specialist team of 13 dedicated professionals with expertise in the healthcare sector. Operating across London, Watford, Chelmsford, and Dumfries, the division is led by Charly Winder and is focused on delivering tailored, high-quality insurance solutions for healthcare organisations.

Our team supports a wide range of Allied Healthcare Schemes and Group Facilities, working primarily through Delegated Authority arrangements with Intact and Hiscox. We also place open market facultative business with select insurer partners. While we access MGAs when appropriate, they are used sparingly, as they rarely provide optimal outcomes for our clients. Although most of our portfolio is UK-based, we have extensive experience arranging offshore captives and global placements.

While our core strength lies in Professional Liability, we frequently integrate wider liability coverages and other relevant risks to create a unified, comprehensive programmes. This approach allows us to deliver scale benefits and offer clients cleaner, more efficient insurance solutions.

Healthcare Coverage Overview

Healthcare Professionals

- **53,000 Physiotherapists**
- c.85% Market Share
- **2,900 Osteopaths**
- c.70% Market Share
- **25,000 Paramedics**
- c.80% Market Share
- **14,000 Chiropodists and Podiatrists**
- c.80% Market Share

Healthcare Services

- Air Ambulance Services
- Clinics and Hospitals
- Primary Care Services (GP's 111 Services, Walk-In Centres)
- Private Clinics
- Testing and Scanning Services

Financials and Growth

- Just under £10m GWP
- Revenue more than £2m
- 10 Year 700% Growth - £3000k in 2016

Contact:

Charly Winder

T: 01923 298422

M: 07739 615920

E: Charly.Winder

@jameshallam.co.uk

Elizabeth Hall

T: 0203 8409920

M: 07849 835462

E: Elizabeth.Hall

@jameshallam.co.uk

James Brooke

T: 01245 206276

M: 07754 554284

E: James.Brooke

@jameshallam.co.uk